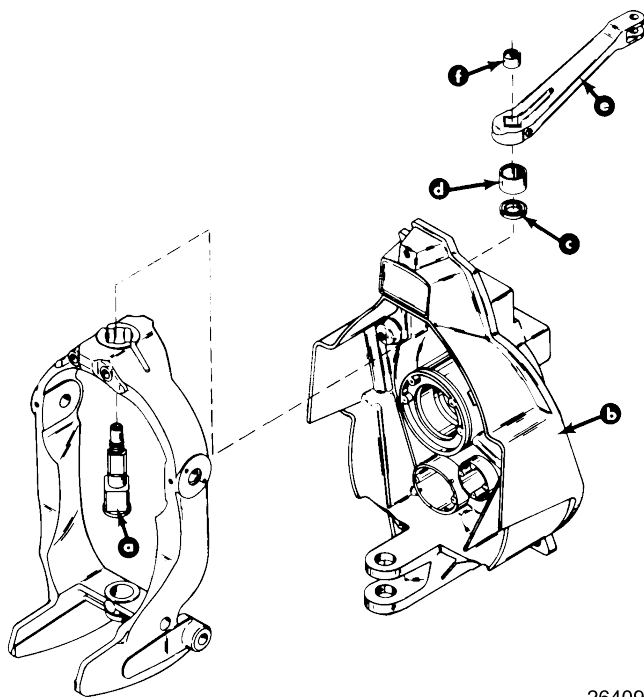


Upper Swivel Shaft

Transom assembly serial number 6666130 and above.

A new square swivel shaft steering lever provides a square connection at both the steering lever and gimbal ring for improved durability. In the past, a splined connection was used between the steering lever and swivel shaft. To facilitate this change, a new swivel shaft seal and two (2) new bushings were required. The gimbal housing also is machined differently. The new swivel shaft and steering lever components can not be used on older models.

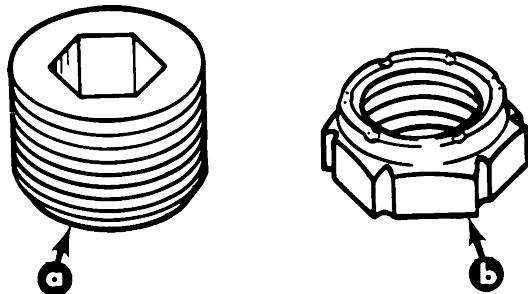


Square-Square Swivel Shaft, Steering Lever and Related Components

- a - Square - Square Swivel Shaft
- b - Gimbal Housing
- c - Seal
- d - Bushing
- e - Steering Lever
- f - Bushing

Gimbal Housing Access Plug Kit

This kit, available for use on MerCruiser Transom assemblies, allows for removal and installation of gimbal ring without having to remove engine and transom assembly. A template also is included in this kit to locate access holes.



- a - Plastic Plugs (2)
- b - Nut Swivel Shaft Nut

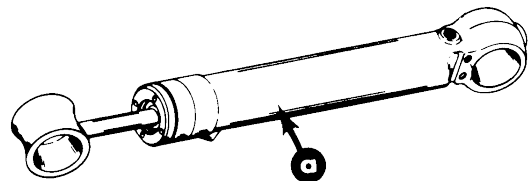
Increased Drive Unit Trim Range

MerCruiser I-MR and Alpha One models will have an additional 3° trim “IN” capability. This should help to get the boat bow down, thereby improving acceleration on some boats.

The additional trim capability was accomplished by the use of new trim cylinders and the gimbal ring.

New trim cylinders can be distinguished from the old ones by observing the casting number on the outer tube.

	Present	Later	Older
Port Trim Cylinder	14034-1	98703-1	98703
Starboard Trim Cylinder	14035-1	98704-1	98704



Trim Cylinder Casting Location

- a - Part Number Location